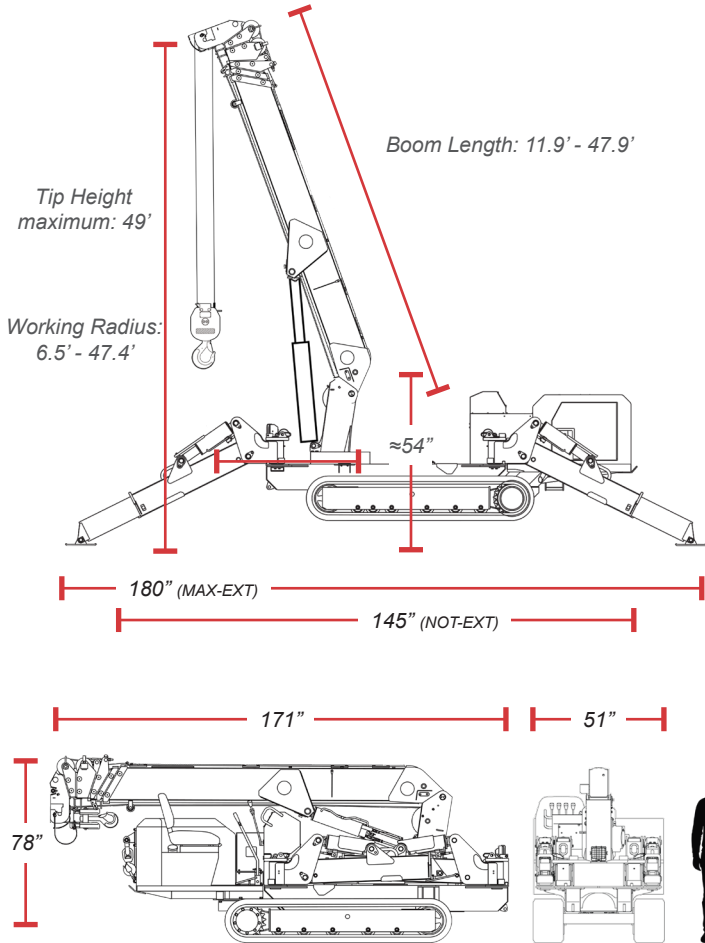
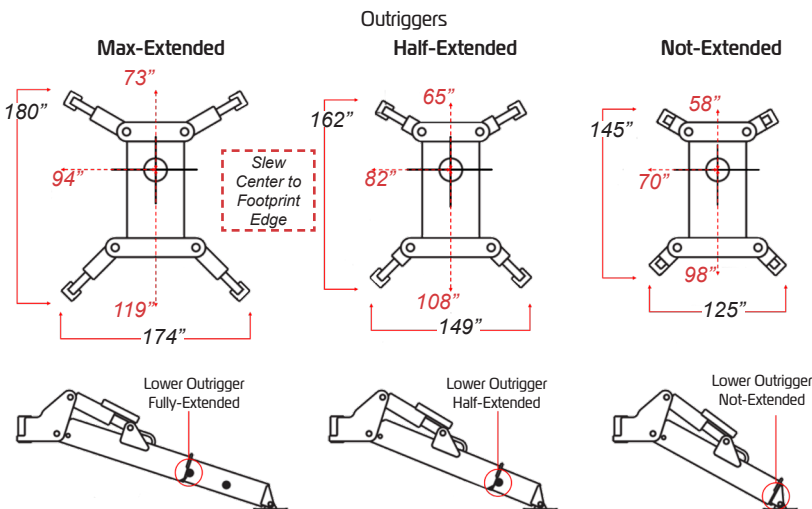


Nominal Deployment
MAX-EXT Outriggers
Boom Stage 1, over-the-front, 70°



Deployed footprints



SPECIFICATIONS

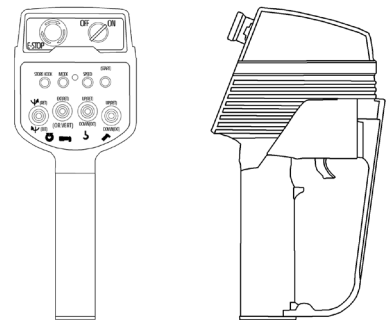
System Working Weight	8510 lbs (3933 kg) (diesel only)
Max Rated Capacity	5,800 lb (3030 kg) (4-Part)
Boom Length	11.9' - 47.9' (3.6M - 14.6M)
Working Radius	6.5' - 47.4' (2M - 14.5M)
Maximum Tip Height	49' (14.94M)
Wire Rope	254' (77M) of 5/16" (8mm) 6x26 WS IWRC
Winch Speed	55.8' (14M) per minute (at 5th layer)
Boom Type	Six-section hexagonal, hydraulic
Telescope Speed	36' in 23 seconds
Angle Speed	0° - 80° in 10 seconds
Slew Speed	2.5 rpm, continuous rotation
Max Travel Speed	3.5 mph
Travel Grade/Limits	23° fore-aft, 20° side-side

FEATURES

Integrated computer controller	Rough terrain travel capability
Load moment indicator	Selectable-length outriggers
Wireless remote controller	On-board toolkit
Progressive, infinitely-variable controls	Integrated hydraulic holding valves and self-braking motors
Crane/outrigger function control interlock	Two-block and minimum-wire rope detection and prevention
Multiple transport options	Outrigger/Upperworks cross-command safety cutout
6.7' fly jib with searcher and 1-part hook blocks	

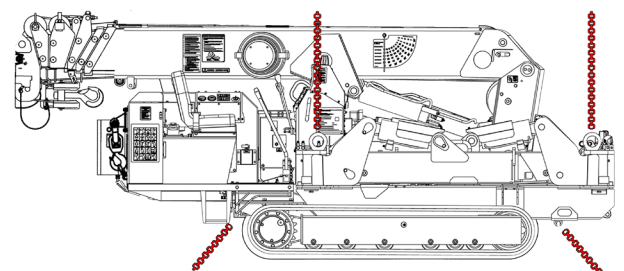
Remote Controller

- 458-459 MHz
- ≈330' range)
- Designed for one-hand operation
- Powered by four AAA batteries (10 hours of use)
- Progressive-control action trigger

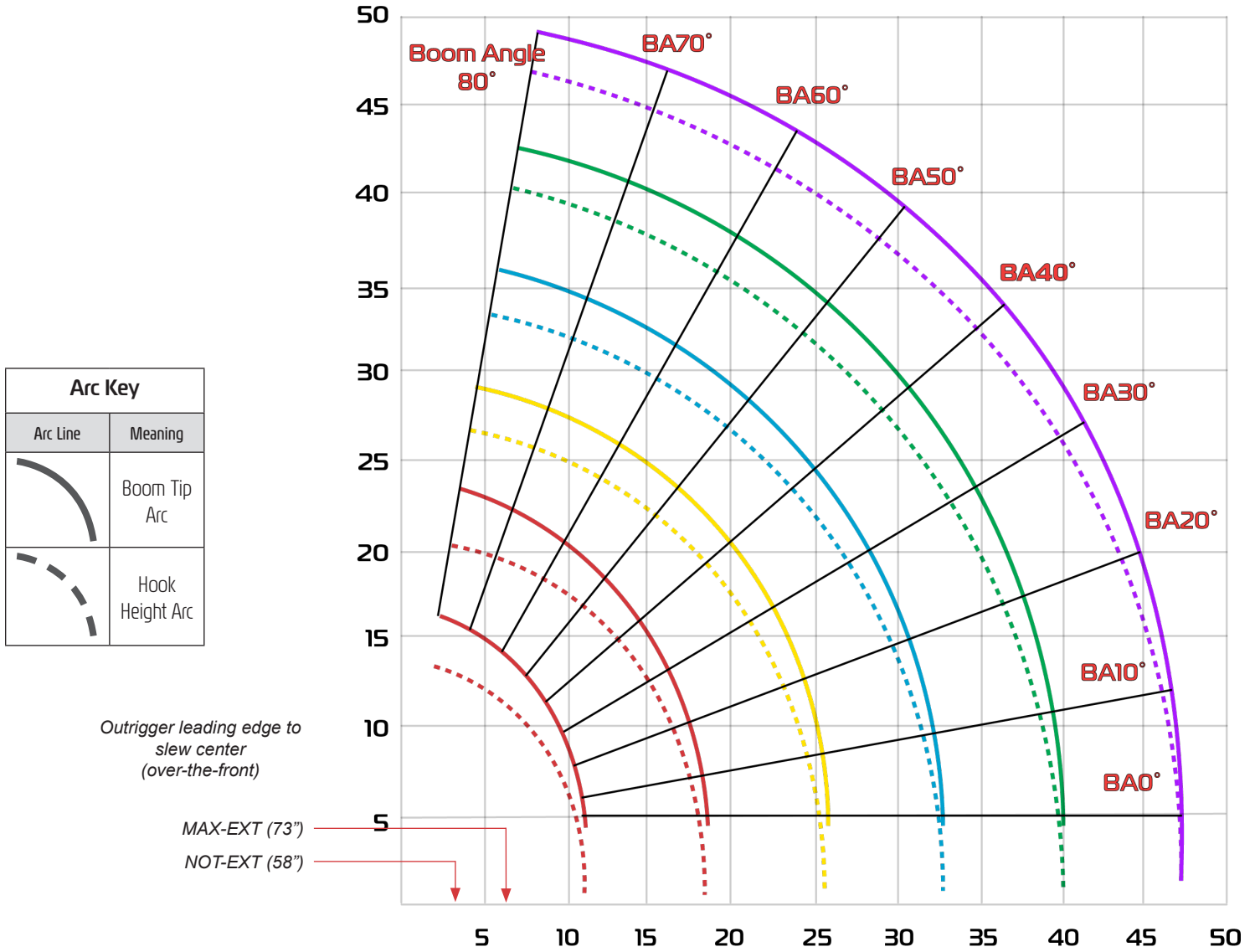


Transport Options

Four Hoisting and Tie-Down Points



Working Range, Boom



Load Chart, Boom, 4-Part Hook Block

BOOM STAGE	Deployment State	Working Radius (feet)										
		6.5	8	10	11	13	15	17	18.6			
BOOM STAGE 1 AND 2	MAX-EXT	5800	5800	5150	4570	3760	3180	2780	2420			
	HALF-EXT	5800	5800	5100	4520	3600	2750	2100	1760			
	NOT-EXT	5800	5800	4730	3700	2550	2000	1500	1100			
BOOM STAGE 3	Deployment State	8.5	10	11	13	15	16	18	20	23	25.8	
	MAX-EXT	5000	4500	3900	3150	2710	2500	2160	1870	1580	1360	
	HALF-EXT	5000	4500	3900	3150	2570	2350	1870	1410	1050	880	
BOOM STAGE 4	Deployment State	13	15	16	20	23	26	30	33			
	MAX-EXT	2330	2080	1960	1650	1430	1220	1080	900			
	HALF-EXT	2330	2060	1940	1500	1170	910	650	500			
BOOM STAGE 5	Deployment State	15	16	20	23	26	30	33	36	40.2		
	MAX-EXT	1670	1480	1100	920	820	710	650	590	570		
	HALF-EXT	1670	1480	1070	920	780	650	550	440	350		
BOOM STAGE 6	Deployment State	16	18	20	23	26	30	33	36	39	43	47.3
	MAX-EXT	720	660	610	550	510	450	410	370	350	300	280
	HALF-EXT	720	660	610	550	510	450	410	330	270	190	150
	NOT-EXT	720	660	610	550	450	290	240	170	130	110	80